

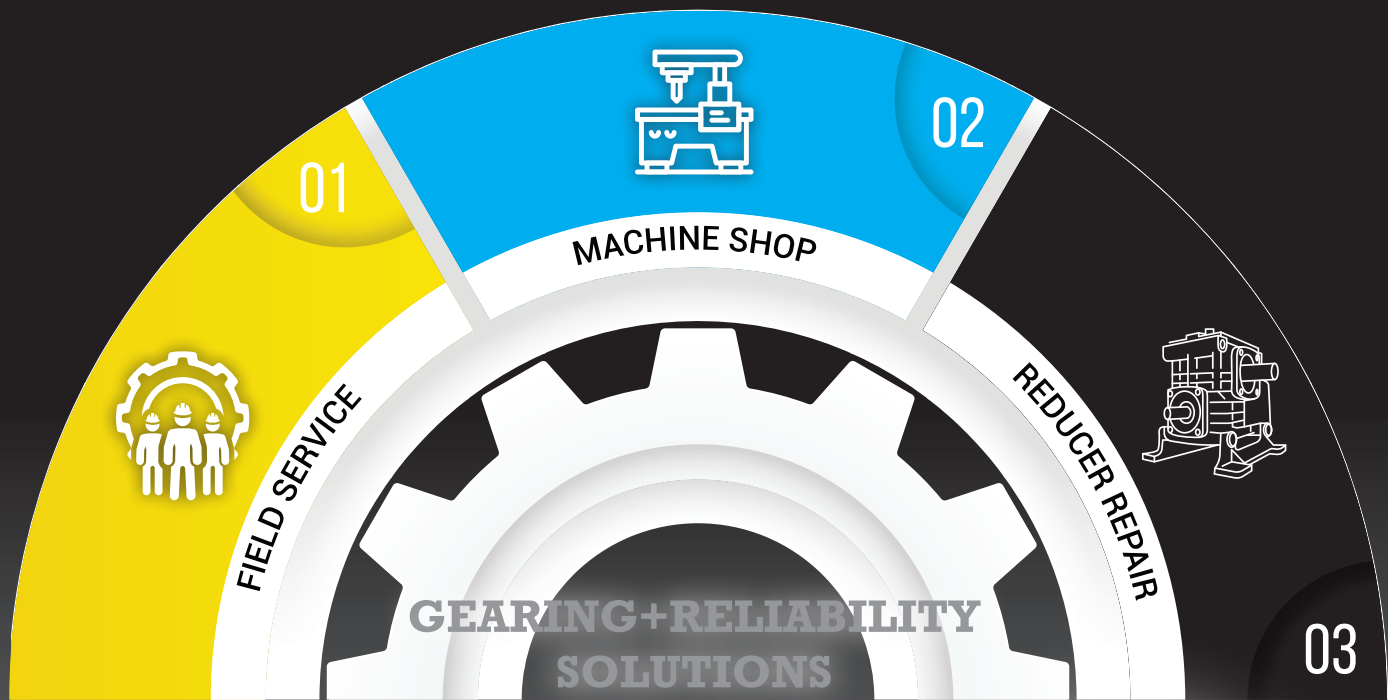
Western MachineWorks

ESTABLISHED 1907



**GEARING+RELIABILITY
SOLUTIONS**

WESTERNMACHINEWORKS.COM



Western
MachineWorks™
Est. 1907



The combination of over 160 years based
on people, experience, and knowledge.

**THERE'S NO CHALLENGE
WE CAN'T SOLVE!**

Both family founded companies, B&D and WMW have outstanding work ethic and values. John Nations, founder of B&D, believed in the Golden Rule: *"Treat others in the manner in which we want to be treated."*

Western Machine Works was founded on the principles of providing cost effective, quality craftsmanship and engineering to all of their customers.

Both companies started as a "Ma and Pa" shop and, even with significant growth, continue to place a high importance on satisfied customers who are treated like family. We pledge to uphold the standards and dignity of the engineering profession and to serve humanity by making the best use of Earth's precious wealth.

- Industry's most experienced and skillful experts
- Heritage of putting a customer's needs first
- Professionals who can diagnose, engineer and repair in rapid time
- Legacy of customer loyalty that spans generations

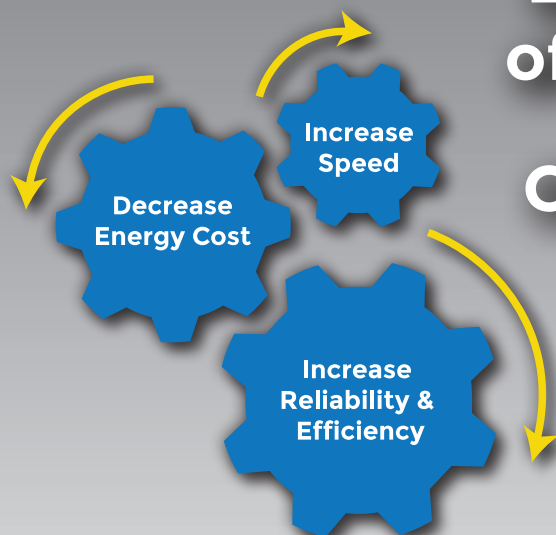


WMW Founded in 1907
by Frank Schmitz



B&D founded in 1947
by John D. Nations

Expansion of Services to our Customer!



The merging of WMW and B&D brings:

- More technological resources
- More manufacturing partners
- More engineering capability
- More Resources to expand the current services in the WA area
- Combined years of experience and knowledge, creating more diversity to assist in helping customers with reliable, long term solutions.
- Coast to coast capability



Machine and Fabrication Shop



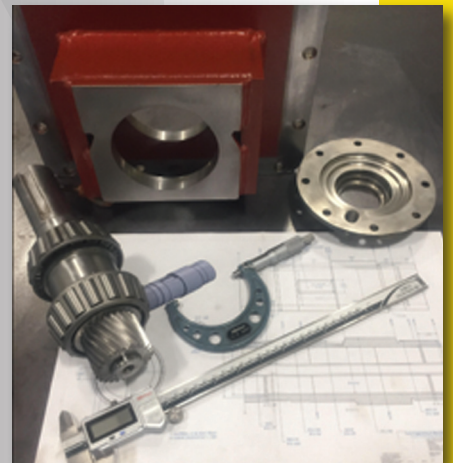
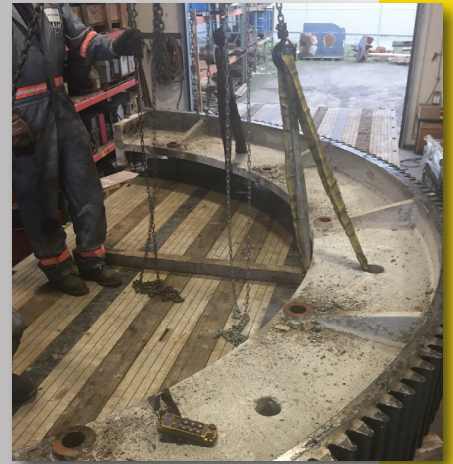
- Fully Equipped 15,000 Square Foot Machine Shop Facility
- Close ties with local supply chain. Expedited turnarounds!
- 20 and 10 Ton Crane Capacity
- Engineering Staff-involved with project from start to finish (hands on)
- Multitude of expertise in many industries
- Full Service Manufacturing-new part/duplicated part/re-engineered
- Repair of existing part to meet new demands of increased productivity

General Machine Work:

- Industrial Rolls
- Knurled Rolls
- Line Boring
- Keyed Shafting
- Threading
- Turning & Milling
- Industrial Plant R&M Maintenance
- Hydraulic Repair and Design

Get back on the road to high productivity with our repair and maintenance service.

- Convenient Drop-Off Location
- Fast Turnaround Times
- On-Site Mechanic
- On-site Portable Machining
- Part Repair, Design and Rebuild Service
- Maintenance Plans
- Computer Aided Equipment
- Complex Equipment Rebuilds
- Heavy Equipment Modification
- Component Repairs
- General Repairs on Wear Items
- Line Boring
- General Welding
- Rotex Bearing Repairs





B&D Field Service

- 24/7/365 Emergency Call-Out
- On-Site Repairs And Maintenance
- 30+ Years Providing Reliable, Technical Solutions
- Experienced, Safety-Certified Millwrights and In-Field Machinists
- Full-Time Engineering Staff
- Gearing & Bearing Training
- Scheduled Routine And Urgent Maintenance

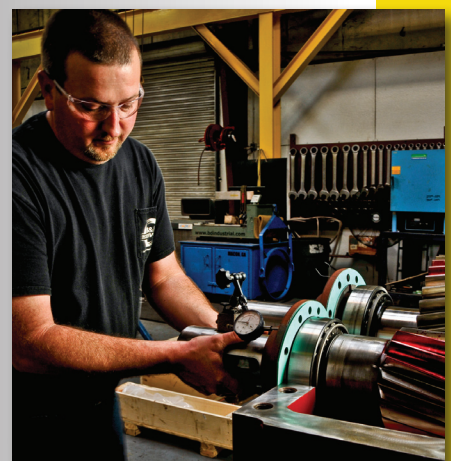
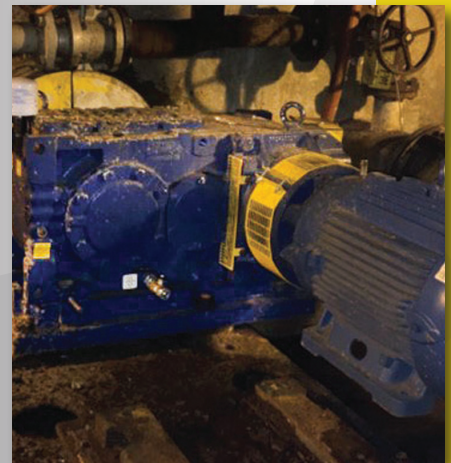


Certified Welder

Our field service crews handle everything from general repairs to large scale industrial maintenance. They are well equipped with all the machinery and tools to get the job done at your location. Our specialty is line boring your heavy equipment and welding machinery to get it up and running in a hurry.

B&D Reducer Repair

- Specialize in repairing all major brands and styles of gearboxes
- Authorized distributor for top tier bearing and power transmission manufacturers. This allows us to provide competitive prices on whole units and components
- Availability of all technical data pertaining to manufacturer's OEM gearbox
- Timken certified shop
- Customized preventive maintenance programs
- Gearbox inspections and replacement
- On-site rebuild
- Turn-key jobs
- Partnership with major gear manufacturers



GEARING+RELIABILITY SOLUTIONS



With 4 service centers located in Tacoma WA, Macon GA, Savannah GA, and West Monroe LA, we are prepared to be on the ground in hours, not days. Each G.R.S. Center is designed to handle overflow from its sister facilities in the event a shop is at capacity. This strategy enables us to ensure tight turnaround times without ever compromising the quality of our repair work.

Our growing customer base will continue to drive us to open more locations to better serve our customer's needs! We continue to grow so that we can meet the needs of the diverse.



**Western
MachineWorks**
ESTABLISHED 1907