

Western Machine Works

**Precise engineering, manufacturing and
repair service for more than 100 years.**

Western Machine Works keeps you up and running!

Western Machine Works

Total dedication to service our customers' needs has made Western Machine Works prosperous for more than 100 years.



General Machine Work

Western Machine Works offers a full compliment of computer-aided equipment so we can provide a wide range of services. We handle all types of machinery and component parts using materials ranging from all grades of steel, brass, aluminum to nylon, plastics and UHMW.



Field and Outside Service

Our mobile field service is unsurpassed. We offer welding, line boring, turning and milling up to ten feet in place; all within exacting tolerances. Our specialized crews can also assist you with your routine preventive maintenance.



Design/Build Engineering

Our on-staff certified mechanical engineer works with you to design custom machinery or retrofit existing equipment. Innovation in engineering allows us to keep your equipment running and productive beyond its expected service life.



Heavy Equipment Repair

All of your heavy equipment repair and maintenance can be accomplished in our fully-equipped, 15,000 square foot shops. Customers have a convenient drop off location and quick turn around to keep them in the field and not lose productivity.



Hydraulic Cylinder Repair

Your hydraulic cylinder repair or rebuild will happen in a timely fashion and get you running like new. Our specialty services include knurling, babbitt bearings, gear box repairs, key seating and surface grinding and 24 hour emergency service.



Welding and Fabrication

Western Machine Works' experienced and certified welders complete your work with precise attention to detail and fine craftsmanship. Their capabilities include TIG, MIG, Dual Shield, Heliarc, Scarfing and Heat Straightening.

Machine Work and Manufacturing Repair

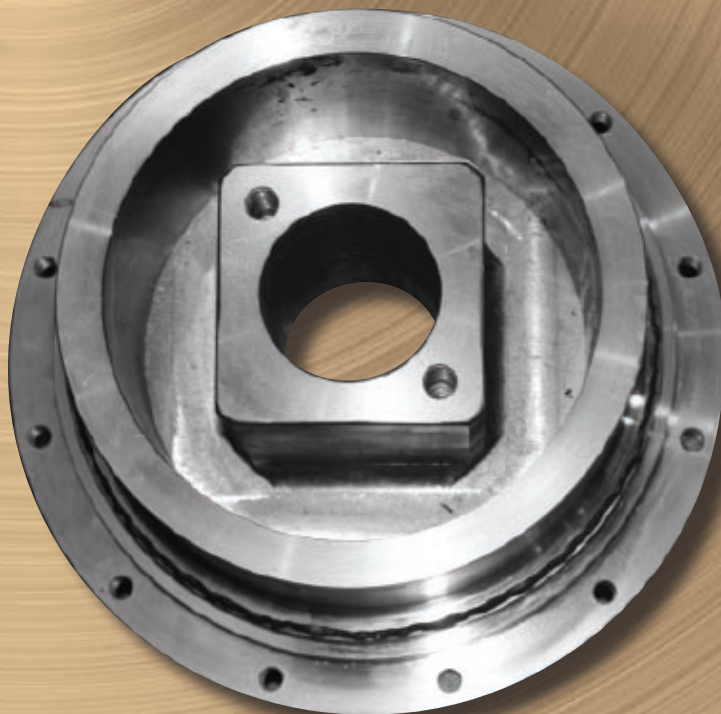
- ⚙ **24 hour on-call service**
- ⚙ **Expert assessment and estimates**
- ⚙ **Repairs done on-site or our shop**
- ⚙ **All repair work is guaranteed**



Our qualified workforce is here to repair, duplicate or recreate what you need to maintain and keep your equipment running. Our shop is equipped with lathes, mills and specialty machines of all sizes to match your machinery.

Industries Served and Specialized Equipment Serviced:

- ⚙ Recycling
- ⚙ Woodworking
- ⚙ Forest Products
- ⚙ Heavy Construction
- ⚙ Corrugated and Paper Board Plants
- ⚙ Gravels Plants
- ⚙ Marine & Fisheries
- ⚙ Gypsum Manufacturing
- ⚙ Wastewater Treatment
- ⚙ Crane Equipment
- ⚙ Mining
- ⚙ Civil Construction
- ⚙ Conveyor Systems
- ⚙ Food Service Plants



**Western
Machine Works**

Field and Outside Service

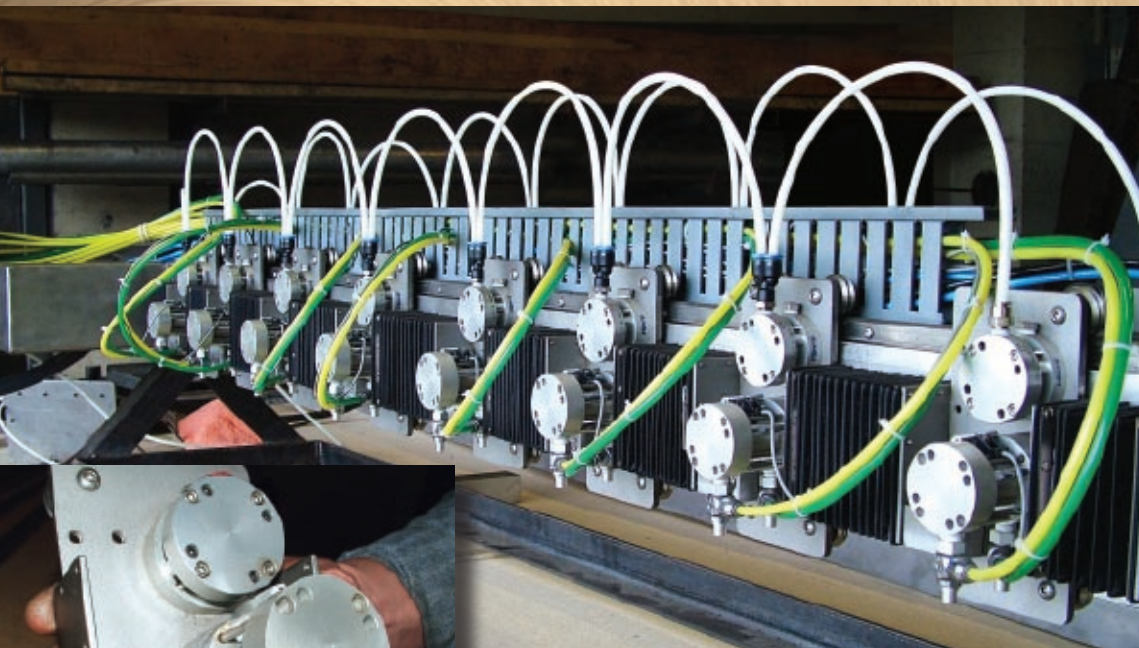
- ⚙ **24 hour on-call service**
- ⚙ **On-site repairs and maintenance**
- ⚙ **Portable machines come to you**
- ⚙ **All repair work is guaranteed**



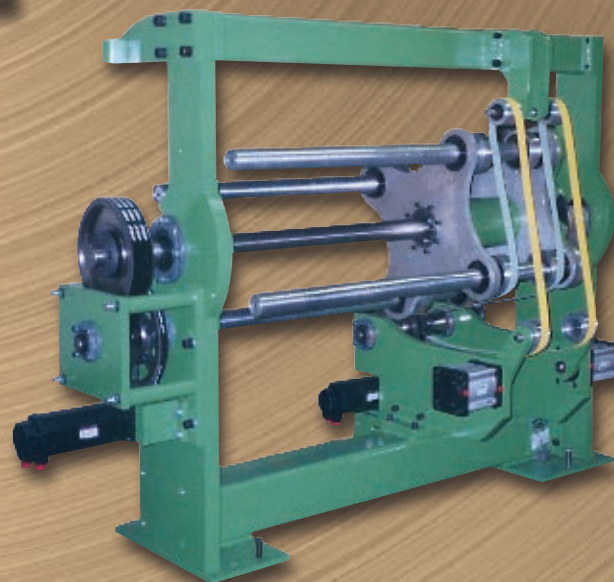
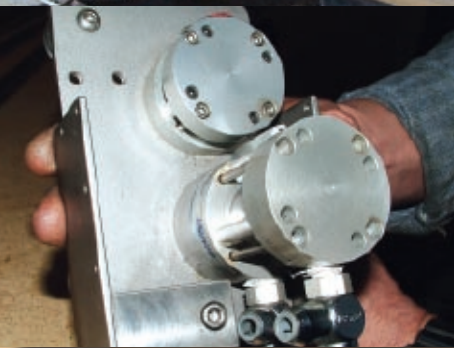
Our field service crews handle everything from general repairs to large scale industrial maintenance. They are well equipped with all the machinery and tools to get the job done at your location. Our specialty is line boring your heavy equipment and welding machinery to get it up and running in a hurry.

Design/Build Engineering

- ⦿ **Prototypes**
- ⦿ **Automated machine design**
- ⦿ **Concept development**
- ⦿ **Redesign/retrofitting**
- ⦿ **Consulting and concept development**
- ⦿ **Motion control**
- ⦿ **Computer aided design (CAD)**
- ⦿ **PLC Programming (PLC Direct, Omron, Allen Bradley, RS Logix)**
- ⦿ **Mechanisms and devices**



At Western Machine Works we help our customers automate costly, labor intensive tasks by designing and retrofitting existing machines to maximize efficiency. Our expertise in machine design and automation helps you run more cost effectively.



The machines pictured on this page were designed by Milt Turco, the in-house designer for Western Machine Works, Inc.

**Western
Machine Works**

Heavy Equipment Repair

- ⦿ **24 hour on-call service**
- ⦿ **Service available 365 days a year**
- ⦿ **Complex equipment rebuilds**
- ⦿ **Equipment modification**
- ⦿ **Component repairs**
- ⦿ **General repairs on wear items**
- ⦿ **Line boring, general welding and rotex bearing repairs**
- ⦿ **20 and 10 ton crane capacity**



From bulldozers, loaders, excavators to boom trucks, forklifts and tractors we are equipped to handle your heavy equipment repairs and maintenance.. Our field services are available for most types of earthmoving equipment.

Hydraulic Cylinder Repair

- ⦿ **Complete rebuilds**
- ⦿ **Re-pack or reseal**
- ⦿ **Machine rods, barrels, pistons, cleavises, and glands**
- ⦿ **Pick up and delivery service available**
- ⦿ **Emergency service and quick turn around time**



Quality cylinder repair is far more than seals and new paint. We will fine tune your hydraulic cylinders and keep them running like new. Our cylinder technicians repair and rebuild all types of hydraulic cylinders in our cylinder shop.



Welding and Fabrication

- ⦿ **24 hour on-call service**
- ⦿ **Failure analysis**
- ⦿ **Custom alloy selection**
- ⦿ **Gas Tungsten Arc (TIG)**
- ⦿ **Gas Metal Arc (MIG)**
- ⦿ **Flux cored welding**
- ⦿ **Stick welding**
- ⦿ **Brazing & soldering**



We recently expanded our facility to meet your welding and fabrication demands. Our new expansion allows us the ability to do large and small scale projects efficiently and effectively. Our certified welders and precision machinists can handle most of your fabrication needs.



**Western
Machine Works**

Workplace Safety

- ⚙ **Employees are provided regular safety training**
- ⚙ **Machinery regularly maintained**
- ⚙ **Standard operating procedures used for all machinery**
- ⚙ **All workers are union certified personnel.**
- ⚙ **All work is performed in accordance with applicable regulatory requirements.**



Western Machine Works, Inc., has created a Machine Shop Safety Program designed to meet or exceed Occupational Safety and Health Administration (OSHA) standard 29 CFR 1910.211-.219 Machinery and Machine Guarding and Washington State Department of Labor standards. Included in the safety program are applicable parts of related OSHA (PEOSH) standards relating to housekeeping, means of egress, and hand and power tools.

About Us

Founded in 1907 by Frank Schmitz and centrally located in the Tacoma tide flats, Western Machine Works, Inc. is a fourth generation family owned business. Today, Western Machine Works is in its original location and run by James "J.P." Schmitz, greatgrandson of the founder. The company has grown over the years to match the needs of increasingly complex machinery and new industries. Our recent expansion of 7,000 square feet is one more step in making Western Machine Works your best call.

For more than 100 years we have followed our founding principals - providing cost effective, quality craftsmanship and engineering to all our customers. Our highly skilled people and their dedication to excellence make Western Machine Works the best call you can make to meet your machining needs.

Washington State Contractors No. WESTEMW911CE



Western Machine Works

652 East 11th St., Tacoma, WA 98421

www.westernmachineworks.com

**24 hours a day:
(253) 627-6538**